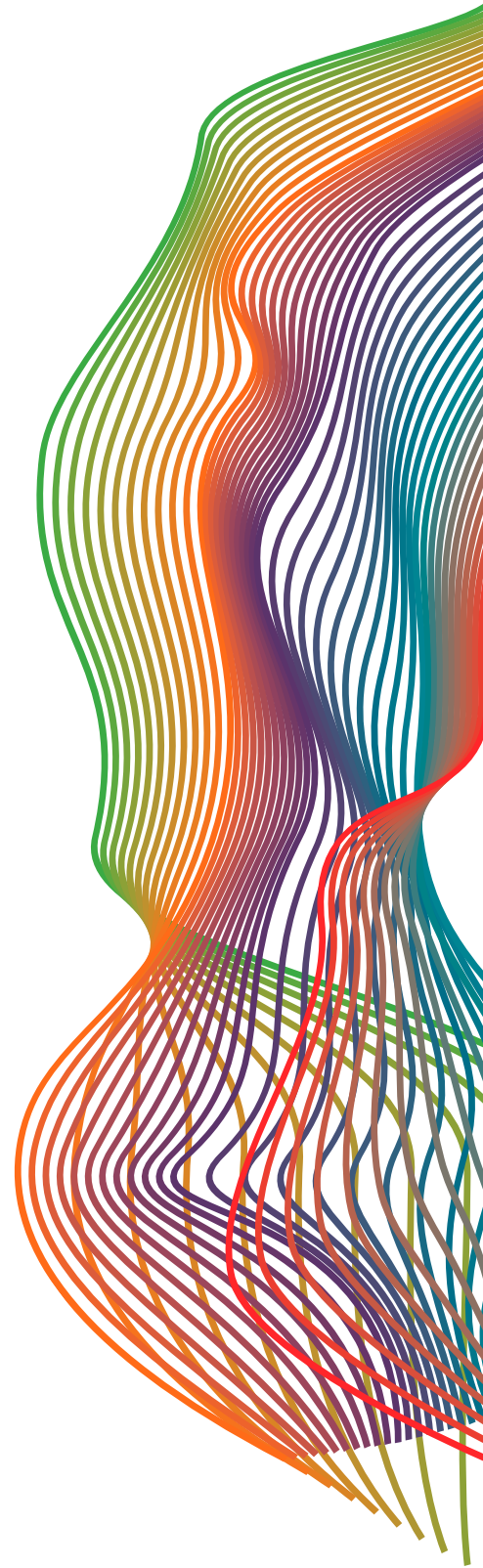


# **PLTW DISTINGUISHED PROGRAM RECOGNITION**

**ELIGIBILITY FORM CHECKLIST**  
2024-2025





## PLTW Launch (K-5)

- Your school offered, and had students enrolled in, at least one PLTW Launch module in each grade (K-5) during the 2023-24 school year.**
  - Data you'll need: Count of Launch modules your school offered in each grade K-5 in 2023-24.
- At least 75 percent of students in your school participated in at least one PLTW Launch module during the 2023-24 school year.**
  - Data you'll need: For 2023-24, count of all students in your school who participated in one or more Launch module in each grade K-5; count of all students enrolled in grade K-5 in 2023-2024.



## PLTW Gateway (6-8)

- Your school offered, and had students enrolled in, at least one PLTW Gateway unit in each grade (6-8) during the 2023-24 school year.**
  - Data you'll need: count of all Gateway units offered in 2023-24 in each grade from 6-8.
- At least 50 percent of students in your school participated in a PLTW Gateway unit during the 2023-24 school year.**
  - Data you'll need: Count of all students in grades 6th-8th who participated in one or more Gateway unit in 2023-24; count of all students enrolled in grades 6th-8th in 2023-24.
- At least 25 percent of students who participated in a PLTW Gateway unit during the 2023-24 school year also participated in at least one other PLTW Gateway unit during the 2023-24 school year or earlier (two or more units total).**
  - Data you'll need: Of those students enrolled in a Gateway unit in 2023-24, count of how many either: 1) participated in 2 or more units in 2023-24 or 2) participated in a Gateway unit in 2022-23 (or earlier).
- Please describe the strategies your school has in place to ensure that all students have the opportunity to participate in PLTW programs.**
  - Data you'll need: The PLTW Distinguished Program Recognition Team will use a rubric to assess whether responses meet eligibility requirements for the Distinguished Program designation. The rubric evaluates whether schools describe specific strategies for ensuring access for all students in at least one of the following areas:
    - Ensuring all students are aware of PLTW opportunities;
    - Providing access to PLTW for all students;
    - Using data to monitor gaps in PLTW access and/or success;
    - Ensuring students feel represented in the PLTW curriculum;
    - And other strategies that promote access to or success in PLTW for all students.



## PLTW High School Programs

- Your school offered, and had students enrolled in, at least three PLTW High School courses from any pathway during the 2023-24 school year.**
  - Data you'll need: Count of all students enrolled in the school in 2023-24 in each grade from 9th-12th; count of all students enrolled in PLTW in 2023-24
  
- At least 25 percent of students in your school participated in PLTW High School courses from any pathway during the 2023-24 school year OR at least 33 percent of those students who participated during the 2023-24 school year also took at least one other PLTW course during the 2023-24 school year or earlier (two or more courses total).**
  - Data you'll need: Count of all students enrolled in PLTW in 2023-24 alongside a count of all students enrolled in the school in 2023-24; OR of those students enrolled in a PLTW course in 2023-24, count of how many either: 1) participated in 2 or more courses in 2023-24 or 2) participated in a PLTW course in 2022-23 (or earlier).
  
- Please describe the strategies your school has in place to ensure that all students have the opportunity to participate in PLTW programs.**
  - Data you'll need: The PLTW Distinguished Program Recognition Team will use a rubric to assess whether responses meet eligibility requirements for the Distinguished Program designation. The rubric evaluates whether schools describe specific strategies for ensuring access for all students in at least one of the following areas:
    - Ensuring all students are aware of PLTW opportunities;
    - Providing access to PLTW for all students;
    - Using data to monitor gaps in PLTW access and/or success;
    - Ensuring students feel represented in the PLTW curriculum;
    - And other strategies that promote access to or success in PLTW for all students.



## PLTW Districts

This form is separate from the individual schools' applications. The criteria must be met by all schools in the district – not just all PLTW schools. If you believe there are extenuating circumstances explaining why a school in your district might not meet the criteria, please explain that in the form.

- At least 20 percent of students in each grade, K-12, participated in a PLTW program during the 2023-24 school year**
  - Data you'll need: Count of all students enrolled in each grade level (K-12) across the district in 2023-24; Percent of students in each grade level (K-12) across the district who participated in PLTW in 2023-2024
  
- OR each school within the district meets that PLTW Distinguished School Program criteria for the 2023-24 school year.**
  - Data you'll need: Evidence that all schools meet the criteria